

Contact our HS2 Helpdesk team on **08081 434 434** or HS2enquiries@hs2.org.uk

HS2 Update

Calvert Area | April 2021

High Speed Two (HS2) is the new high speed railway for Britain.

HS2 main works update

We are progressing the HS2 'main works' phase and this update is to provide you with information about the works that you will see taking place in the Calvert and surrounding area. The early works are continuing in the area and EKFB main civil engineering works are underway.

The West Street main works compound has been set up and this provides the offices (pictured bottom right), welfare and material storage for the staff and workforce. The compound on Calvert Road is being set up and this will include a concrete batching plant.

Internal access roads are also being formed to move people and materials from compounds to the various work areas where the new structures such as bridges and underpasses will be formed, keeping vehicles off the local road network.

The activities that will be taking place throughout this year will include the following and further details on these can be found in this update:

- Completion of works compound and setting up a concrete batching plant
- Forming internal access roads including a crossing and temporary bridge across Gawcott road
- Importing aggregates by rail and starting work on structures such as new bridges and culverts
- Starting earthworks activities as well as localised demolitions

Brackley Lane Webinar

Fusion will be hosting a webinar in early April ahead of work beginning in the Brackley Lane area, with an update on early works and main works.

Calvert virtual 1-1 engagement

Starting in April 2021

In absence of our face-to-face events, we will be hosting virtual sessions where you can meet with members of our team on a 1-1 basis to discuss your concerns or queries.

Please contact the HS2 Helpdesk or visit hs2.org.uk/events for more information.

West Street compound set-up



Works in your area

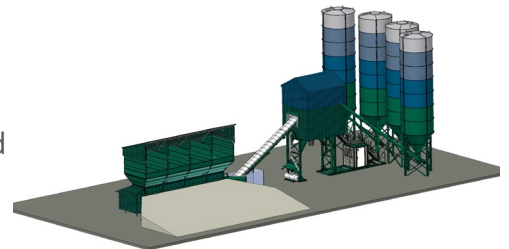
Concrete batching plant

In order to build the structures in the Calvert area we will need large amounts of concrete. A concrete batching plant will be set up from May at our Calvert Road compound and will enable us to mix concrete on site. The compound will comprise of:

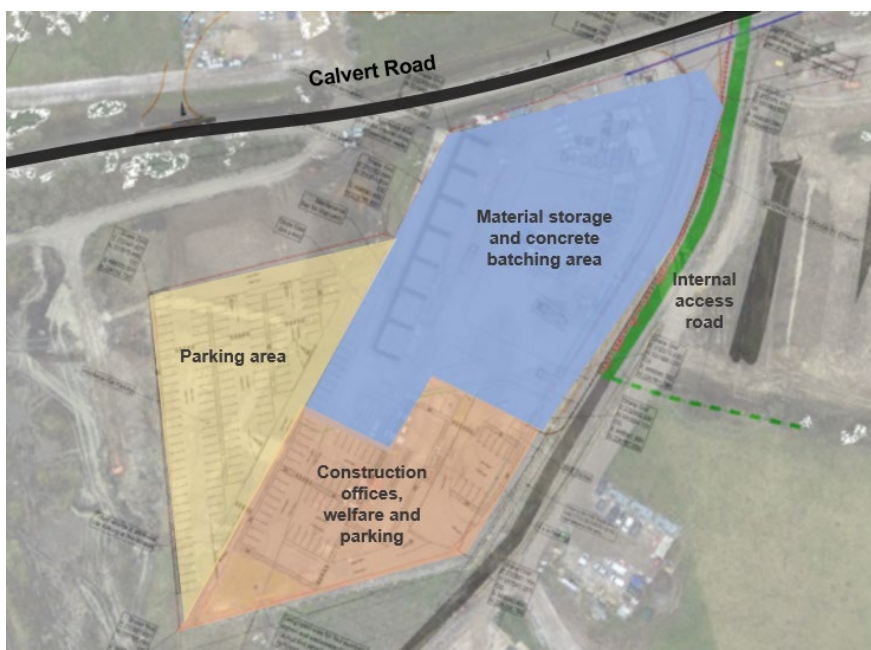
- Four 15m high storage silos (large containers used to store and distribute cement mixes), shaded to blend in with the landscape
- Enclosed mixing unit, cladded and sealed to reduce noise and avoid dust egress.
- Storage bays where lorries can park and material can be stored.
- Parking, offices and welfare facilities for staff working on structures in the area.

Lorries bringing materials to the batching plant will enter via approved HGV routes and internal access roads. Equipment for the batching plant will be transported in containers by road and assembled on site.

How the batching plant will look



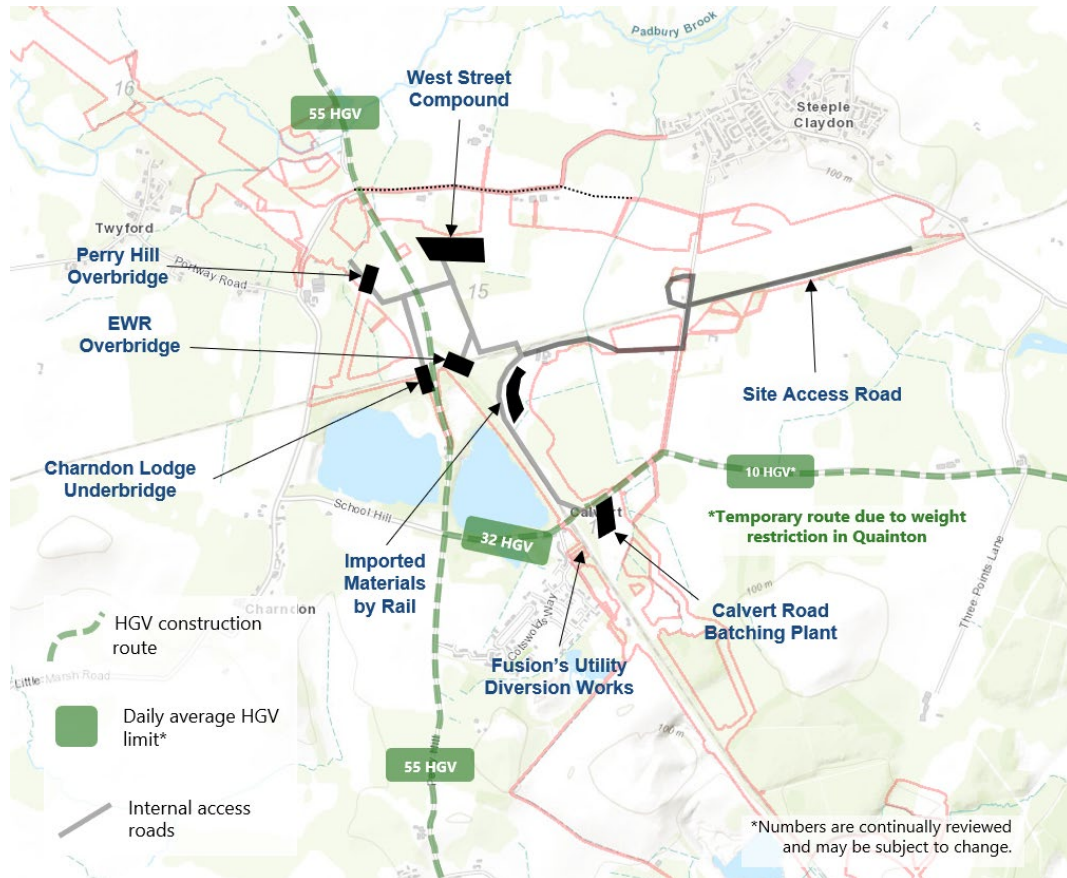
Site Location and Plan:



By mixing concrete on site, we will decrease the number of HGVs delivering concrete on the local road network by almost half every day.

Overview of upcoming works

The map below shows the locations of our compounds and structures that are outlined within this newsletter. It also shows our construction traffic routes, which are the agreed routes that HGVs will take to get to site. Our internal construction access roads will be utilised to prevent journeys on the local road network.



Coordination of HGV routes

This area is going through a lot of change with both HS2 and EWR activity, and Steeple Claydon is also being impacted by two large housing developments. It is important we coordinate our works with these other developments, in particular our HGV routes. HS2 main works HGVs into Calvert are limited through either Gawcott or Edgcott with around 50 daily deliveries through each of these routes.

Transporting aggregates by rail to our Calvert site

We are delivering as much aggregate to the area by rail as we can. **Throughout 2021, more than 180 freight trains are expected to deliver materials to Calvert**, taking the equivalent of 13,000 trucks off the road and saving around 30,000 tonnes of carbon. The rail deliveries have been moved to take place outside of our normal working hours. There may be some noise associated with offloading of materials.

Overview of upcoming works

Gawcott Road and West Street

To allow for the mass movement of earthworks, we need to build a temporary 'bailey bridge' over Gawcott Road. The road will need to be closed for a short duration in Q3 of this year to allow the bridge to be installed – we will be working with the local Parish Councils to coordinate and communicate this closure.

There is also a traffic light controlled 'at grade' crossing of Gawcott Road for movement of vehicles along our internal access road.

West Street will be closed in Q4 of 2021 for around two years, while we construct a new overbridge that will allow vehicles to cross the railway.

Footpaths and bridleways

There are localised footpath closures in place near to where we are working. We engage with local Parish Councils in determining how and when we close footpaths and communicating these to the public.

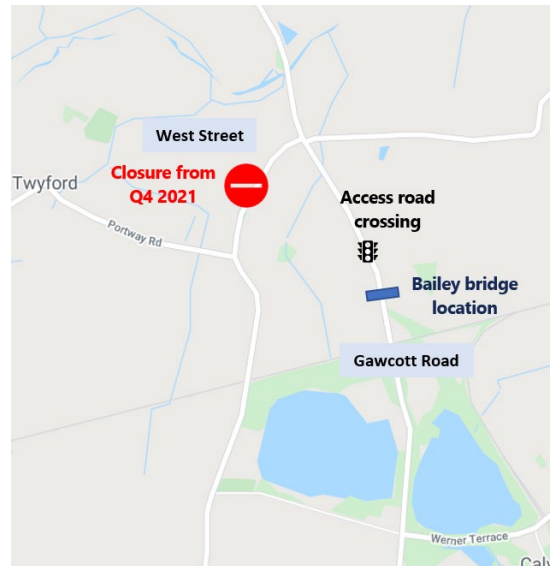
Later in our schedule, we will be putting in place a permanent diversion of the bridleway that runs along the existing railway line and FCC, ready for when this bridleway is closed permanently.

Structures

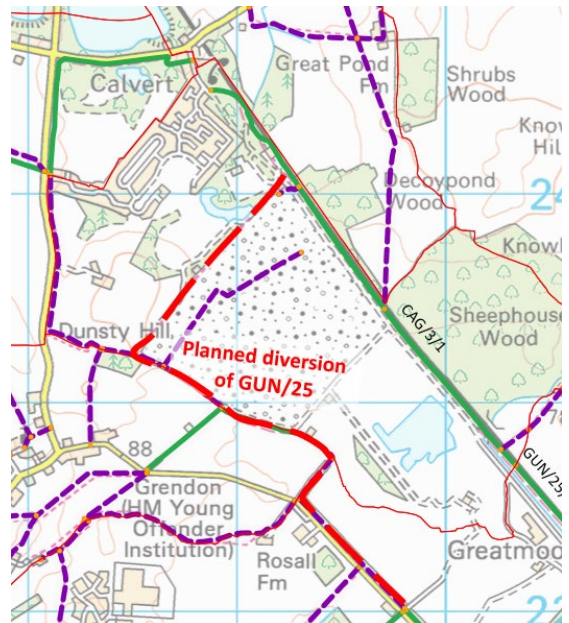
We will be starting work on the various bridge and underpass structures as well as culverts and drainage works. These works will involve boring piles for foundations and forming concrete structures. To carry out these works people and material will travel to the West Street compound and then travel by the internal access roads to their point of work.

The picture on the right shows a graphical representation of the Charndon Lodge underbridge, where the EWR line will cross Gawcott Road.

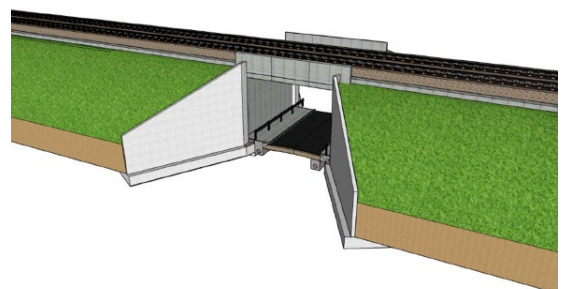
Map of upcoming road works



Map of planned bridleway diversion



Charndon Lodge underbridge



Other updates

Update on early works

We are continuing with early works in this area, which include archaeology and utility diversion works. We are also planting thousands of trees in the area south of Calvert to help increase woodland connectivity and offset the loss of vegetation caused during construction of HS2.

Fusion will shortly be starting their undertrack crossing work to enable utility diversions between the compound at Calvert Road and Brackley Lane. The works will commence in mid-April and ahead of this we will be hosting a webinar in early April.

Ultrasite in Calvert

EKFB has now registered with the Considerate Constructors "Ultrasite" Scheme. An independent assessor will be scoring our sites, starting at West Street compound in Calvert this month, against the principles of the scheme which include: site appearance, respecting communities, protecting the environment, securing everyone's safety and valuing our workforce. EKFB's aim is to exceed on all areas of the Code and actively seek to improve not only our own performance but that of our supply chain.

Covid-19 restrictions

EKFB will soon be easing restrictions for staff and contractors across our sites and offices. From April we will be carefully introducing staff back into local shops and facilities. We will be communicating our Covid-19 roadmap with local Parish Councils.

At our Calvert sites, we have introduced Plinx hard hat technology. These devices use wireless technology to monitor social distancing and warn staff to keep their distance from each other.



Keep up to date with our works

Our local area website provides the most up to date information about our works in this area, including advance work notifications and newsletters. There is a new 'In Your Area Map' page which visualises our upcoming works on an interactive map.

www.hs2inbucksandox.co.uk



Your questions answered

Your local Parish Councillors ask us a series of questions...

Phil Gaskin, Calvert Green Parish Council

Q: When will generators be switched to mains power at compounds?

A: We anticipate that our West Street and Calvert Road compounds will be switched to mains power by Autumn 2021, eliminating the need for generators at these sites.

Q: When will weekend working be an exception not the norm?

A: Our normal working hours include Saturday morning, from 8am until 1pm, however sometimes we need to work outside of these hours. Some activities, for example our concrete batching, will operate everyday including weekends under the relevant consents, however we don't expect disruption for local residents.

Q: When will grass verge damage be rectified and our roads look back to normal?

A: HS2 contractors will repair any verges that are damaged by our works as soon as possible after works complete and if conditions allow. The highway authority is responsible for repairing any damage to the public highway such as potholes, and HS2 will fund any repairs associated with our works.

Frank Mahon, Steeple Claydon Parish Council

Q: Steeple Claydon see quite a lot of HGV's going through the village. How many HS2 HGV's go through the village?

A: Very few, if any of the HGV's that are seen going through the village will have related to HS2. HGV's for our main works can only access the area either from the South through Edgcott or from the North via Gawcott. These deliveries are restricted to a maximum of around 50 per day for each route.

Q: We sometimes see drones operating in the area of HS2. Are these related to your works and what controls or licences do you have for this activity?

A: EKFB have CAA Approval Permission for commercial drone flights, as well as the relevant insurance and risk assessments in place. Our drone pilots are fully qualified and follow strict procedures relating to where and how they can take-off, recommended flight height and who to inform when drones are to be used.

Bob Evans, Charndon Parish Council

Q: Are guard dogs used by your security teams?

A: EKFB's security teams use guard dogs at our sites. The dogs used are general purpose guard dogs and each handler has the required training and accreditation. All guard dogs are kept on the lead at all times whilst on patrol, and whilst not working they are kept in the kennel within the handler's vehicle.

Community Investment

To date we have trained over 500 construction candidates in partnership with various training providers, including the Bucks College Group. For information on careers and local job vacancies, visit EKFB.com/careers.

We are also planning a range of exciting **STEM activities** which we will launch in the next academic year when restrictions are eased.

We recently launched our TimeBank initiative, where staff are encouraged to do one day of volunteering per year. If you have a suggestion for volunteering or community investment, whether it be a spot of gardening or a careers talk, then please get in touch.

We are also pleased to announce that we have joined up with Fusion to purchase 400 easter eggs for children local to Steeple Claydon. Last year, Frank Mahon and his merry men delivered eggs to local children and this year we helped spread some happiness at Easter by funding the easter eggs.



HS2 Funds for the Community

HS2 has two funds which are available to local communities to help with disruption that will be caused by the construction of Phase one of HS2 – **The Community and Environmental Fund (CLEF)** and the **Business and Local Economy Fund (BLEF)**.

So far in the local area HS2 has provided funding to the Saye and Sele Foundation in Quainton to improve their outside learning area, as well as funding the refurbishment of a play area in Charndon to make it more inclusive for local children.

HS2 also part-funded a new Community Café in Steeple Claydon – Molly's Café – which opened in March 2020 and has been popular within the local community.

For more information on the funds available visit <https://hs2funds.org.uk/>



Keeping you informed

We are committed to keeping you informed about work on HS2. This includes ensuring you know what to expect and when to expect it, as well as how we can help.

Residents' Charter and Commissioner

The Residents' Charter is our promise to communicate as clearly as we possibly can with people who live along or near the HS2 route.

www.gov.uk/government/publications/hs2-residents-charter

We also have an independent Residents' Commissioner whose job is to make sure we keep to the promises we make in the Charter and to keep it under constant review. Find reports at:

www.gov.uk/government/collections/hs2-ltd-residents-commissioner

You can contact the Commissioner at:
residentscommissioner@hs2.org.uk

Construction Commissioner

The Construction Commissioner's role is to mediate and monitor the way in which HS2 Ltd manages and responds to construction complaints. You can contact the Construction Commissioner by emailing:
complaints@hs2-cc.org.uk

Property and compensation

You can find out all about HS2 and properties along the line of route by visiting:

www.gov.uk/government/collections/hs2-property

Find out if you're eligible for compensation at:

www.gov.uk/claim-compensation-if-affected-by-hs2

Holding us to account

If you are unhappy for any reason you can make a complaint by contacting our HS2 Helpdesk team. For more details on our complaints process, please visit our website:

www.hs2.org.uk/how-to-complain

Contact Us

Contact our HS2 Helpdesk team all day, every day of the year on:

 Freephone **08081 434 434**

 Minicom **08081 456 472**

 Email **HS2enquiries@hs2.org.uk**

Write to:

FREEPOST

HS2 Community Engagement

Website **www.hs2.org.uk**

To keep up to date with what is happening in your local area, visit:
www.hs2inbucksandox.co.uk

Please contact us if you'd like a free copy of this document in large print, Braille, audio or easy read. You can also contact us for help and information in a different language.

HS2 Ltd is committed to protecting personal information. If you wish to know more about how we use your personal information please see our Privacy Notice
<https://www.gov.uk/government/publications/high-speed-two-ltd-privacy-notice>

Reference number: HS2-EW-EK-Ph1-Ar-Ce-C2-CR-20-17/02/2021

High Speed Two (HS2) Limited, registered in England and Wales.

Registered office: Two Snowhill, Snow Hill Queensway, Birmingham B4 6GA.

Company registration number: 06791686. VAT registration number: 888 8512 56